



# Wearflex® Telescopic Seals



## CONTACT

**INSULCON B.V.** – The Netherlands  
+31 (0) 167 565750  
info@insulcon.com

**INSULCON N.V.** – Belgium  
+32 (0) 3 711 02 78  
insulconnv@insulcon.com

**INSULCON GmbH** - Germany  
+49 (0) 2131 408548-0  
insulcongbh@insulcon.com

**INSULCON PROJECTS S.A.** - Switzerland  
+41 (0) 91 911739-0  
infoch@insulcon.com

**INSULCON**

LEADER IN HIGH TEMPERATURE SOLUTIONS

## General

**Wearflex® telescopic seals** are flexible seals, which are capable to absorb large axial movements at high temperatures (up to 350 mm). They are being manufactured using prefabricated stainless steel half pipe sections with inside high temperature insulation.

## Concept

**Wearflex® telescopic seals** are applied in the (petro) chemical industry where catalyst tubes in reformers penetrate the roof. Tubes in certain reformers have a large expansion into the axial direction only. The penetration has to be sealed off in order to avoid cold air ingress into the radiant section, as cold air ingress will lead to high energy costs.

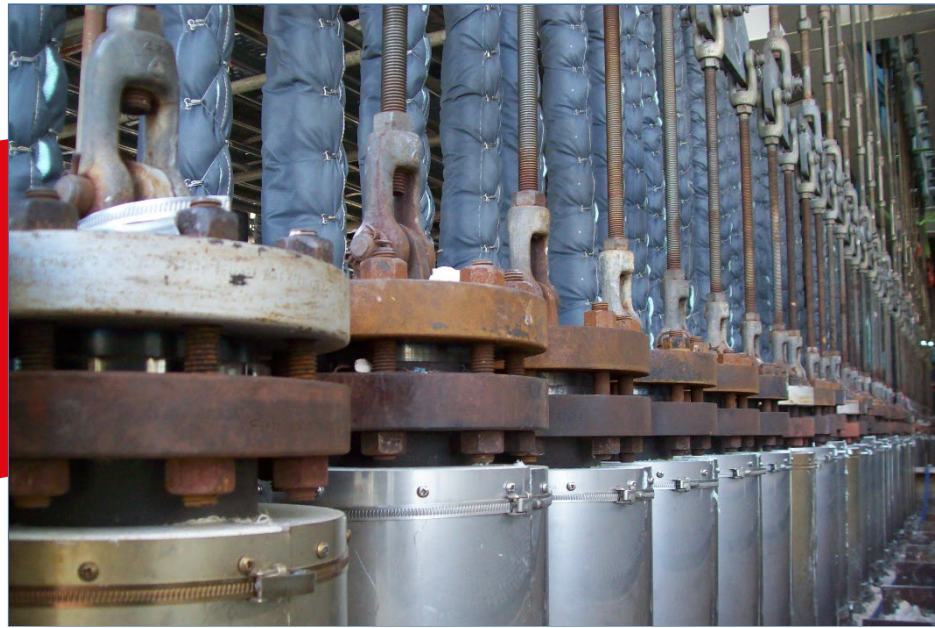
**Wearflex® telescopic seals** are easy to install around each reformer tube at the pigtail connection and on top of the roof. The installation of Insulcon's **Wearflex® telescopic seals** takes only 5-10 minutes, using a screwdriver and stainless steel jubilee clips. The outside two half pipe sections (fixed around each tube) moves like a telescope over the inside half pipe sections (fixed at a steel flange which is welded to the roof steel plate), forming a perfect seal while absorbing axial movements.



[www.insulcon.com](http://www.insulcon.com) / [www.wearflex.com](http://www.wearflex.com)



# Wearflex® Telescopic Seals



LEADER IN HIGH TEMPERATURE SOLUTIONS

## CONTACT

**INSULCON B.V.** – The Netherlands  
+31 (0) 167 565750  
info@insulcon.com

**INSULCON N.V.** – Belgium  
+32 (0) 3 711 02 78  
insulconnv@insulcon.com

**INSULCON GmbH** - Germany  
+49 (0) 2131 408548-0  
insulcongbh@insulcon.com

**INSULCON PROJECTS S.A.** - Switzerland  
+41 (0) 91 911739-0  
infoch@insulcon.com

### Pigtail mattresses

Together with our **Wearflex® telescopic seals** we can offer you our special **Wearflex® insulation cover (pigtail mattresses)** to cover the pig tail tubes from the manifold to the catalyst tube. These mattresses, which are being manufactured at our own production facility, are specially designed to insulated pigtail tubes.

They can be installed quickly compared with the traditional calcium silicate pipe insulation with aluminium foil and tie-wire. Next to this, they can be removed quickly as well, for inspection or maintenance of the tubes.

For more information about other our Wearflex® products, feel free to contact one of our specialists. They will gladly look into the possibilities we can offer your company.

### Advantages Wearflex® telescopic seals:

- Prevent cold air ingress
- Can absorb extreme axial movements
- Decrease heat loss and therefore reduce energy costs
- Easy to install and remove
- Are temperature resistant up to 900°C

**INSULCON**

LEADER IN HIGH TEMPERATURE SOLUTIONS

[www.insulcon.com](http://www.insulcon.com) / [www.wearflex.com](http://www.wearflex.com)